

Somatic mutation of the cohesin complex subunit confers therapeutic vulnerabilities in cancer

Yunhua Liu, ... , Guang Ji, Xiongbin Lu

J Clin Invest. 2018;128(7):2951-2965. <https://doi.org/10.1172/JCI98727>.

Research Article

Oncology

Therapeutics

A synthetic lethality–based strategy has been developed to identify therapeutic targets in cancer harboring tumor-suppressor gene mutations, as exemplified by the effectiveness of poly ADP-ribose polymerase (PARP) inhibitors in BRCA1/2-mutated tumors. However, many synthetic lethal interactors are less reliable due to the fact that such genes usually do not perform fundamental or indispensable functions in the cell. Here, we developed an approach to identifying the “essential lethality” arising from these mutated/deleted essential genes, which are largely tolerated in cancer cells due to genetic redundancy. We uncovered the cohesion subunit SA1 as a putative synthetic-essential target in cancers carrying inactivating mutations of its paralog, SA2. In SA2-deficient Ewing sarcoma and bladder cancer, further depletion of SA1 profoundly and specifically suppressed cancer cell proliferation, survival, and tumorigenic potential. Mechanistically, inhibition of SA1 in the SA2-mutated cells led to premature chromatid separation, dramatic extension of mitotic duration, and consequently, lethal failure of cell division. More importantly, depletion of SA1 rendered those SA2-mutated cells more susceptible to DNA damage, especially double-strand breaks (DSBs), due to reduced functionality of DNA repair. Furthermore, inhibition of SA1 sensitized the SA2-deficient cancer cells to PARP inhibitors in vitro and in vivo, providing a potential therapeutic strategy for patients with SA2-deficient tumors.

Find the latest version:

<https://jci.me/98727/pdf>



Somatic mutation of the cohesin complex subunit confers therapeutic vulnerabilities in cancer

Yunhua Liu,^{1,2,3,4} Hanchen Xu,^{1,2,3} Kevin Van der Jeught,^{2,3} Yujing Li,^{2,3} Sheng Liu,³ Lu Zhang,^{1,2,3} Yuanzhang Fang,^{2,3} Xinna Zhang,^{3,4} Milan Radovich,^{3,4,5} Bryan P. Schneider,⁶ Xiaoming He,^{7,8,9} Cheng Huang,¹⁰ Chi Zhang,^{3,11} Jun Wan,^{3,11} Guang Ji,¹ and Xiongbin Lu^{2,3,4}

¹Institute of Digestive Diseases, Longhua Hospital, Shanghai University of Traditional Chinese Medicine, Shanghai, China. ²Department of Cancer Biology, The University of Texas MD Anderson Cancer Center, Houston, Texas, USA. ³Department of Medical and Molecular Genetics, ⁴Indiana University Melvin and Bren Simon Cancer Center, ⁵Department of Surgery, and ⁶Department of Medicine, Indiana University School of Medicine, Indianapolis, Indiana, USA. ⁷Department of Biomedical Engineering, Ohio State University, Columbus, Ohio, USA. ⁸Fischell Department of Bioengineering, University of Maryland, College Park, Maryland, USA. ⁹Martha and Stewart Greenebaum Comprehensive Cancer Center, University of Maryland, Baltimore, Maryland, USA. ¹⁰Drug Discovery Laboratory, School of Pharmacy, Shanghai University of Traditional Chinese Medicine, Shanghai, China. ¹¹Center for Computational Biology and Bioinformatics, Indiana University School of Medicine, Indianapolis, Indiana, USA.

A synthetic lethality-based strategy has been developed to identify therapeutic targets in cancer harboring tumor-suppressor gene mutations, as exemplified by the effectiveness of poly ADP-ribose polymerase (PARP) inhibitors in BRCA1/2-mutated tumors. However, many synthetic lethal interactors are less reliable due to the fact that such genes usually do not perform fundamental or indispensable functions in the cell. Here, we developed an approach to identifying the “essential lethality” arising from these mutated/deleted essential genes, which are largely tolerated in cancer cells due to genetic redundancy. We uncovered the cohesion subunit SA1 as a putative synthetic-essential target in cancers carrying inactivating mutations of its paralog, SA2. In SA2-deficient Ewing sarcoma and bladder cancer, further depletion of SA1 profoundly and specifically suppressed cancer cell proliferation, survival, and tumorigenic potential. Mechanistically, inhibition of SA1 in the SA2-mutated cells led to premature chromatid separation, dramatic extension of mitotic duration, and consequently, lethal failure of cell division. More importantly, depletion of SA1 rendered those SA2-mutated cells more susceptible to DNA damage, especially double-strand breaks (DSBs), due to reduced functionality of DNA repair. Furthermore, inhibition of SA1 sensitized the SA2-deficient cancer cells to PARP inhibitors in vitro and in vivo, providing a potential therapeutic strategy for patients with SA2-deficient tumors.

Introduction

Major advances in cancer treatment have been achieved in the past few decades. In addition to systematic approaches, such as immunotherapy, hormonal therapy, and chemotherapy, the development of new cancer therapies is usually based on inhibition of disease-associated genes or signaling pathways (1), which is ascribed to the growing understanding of molecular mechanisms for cancer initiation and progression. Targeted therapy directly against those amplified or mutation-activated oncogenes, such as *BCR-ABL*, *BRAF*, or *EGFR*, has proven to be successful (2, 3), whereas the exploitation of tumor-suppressor mutations has lagged behind due to the difficulty of their functional restoration and mechanistic complexity. Synthetic lethality screens are one of the first developed approaches to targeting loss-of-function mutations or deletions in the tumor-suppressor genes (4–8). One notable example is the clinical success of poly ADP-ribose polymerase (PARP) inhibitors in treating breast and ovarian tumors carrying *BRCA1* or *BRCA2* mutations (8–10). Furthermore, PARP

inhibitors also exhibit promising effectiveness in more common cancer types that possess mutations in the genes associated with DNA-damage response and double-stranded break (DSB) repair (11). However, few synthetic lethal interactions share the success of PARP inhibitors, although a large number of synthetic interactions have been found. Obviously, the complexity of parameters in tumor and tumor microenvironment need to be determined for a synthetic lethal interaction from the cell-based screens before such an interaction is considered for translational therapeutics. Additionally, targeting synthetic lethal interactors is often unreliable in selectively killing tumor cells, as these lethal interactions do not perform essential functions and their inhibition can be rescued by complementary pathways.

We and others have proposed the concept of “essential lethality” as a strategy for identifying the unintended therapeutic vulnerabilities that arise from these mutated or deleted essential genes (12–14). Their mutations are largely tolerated in cancer cells due to the fact that many essential cellular functions are carried out by several genes that share redundant functions. Further inhibition of their homologous or paralogous genes would be expected to exclusively eliminate tumor cells harboring those mutations while sparing normal cells that retain an intact genome. The principle of essential lethality builds up a foundation for the development of therapies resulting from tumor-suppressor gene deficiencies

Authorship note: YL and HX contributed equally to this work.

Conflict of interest: The authors have declared that no conflict of interest exists.

Submitted: November 17, 2017; **Accepted:** April 10, 2018.

Reference information: *J Clin Invest.* 2018;128(7):2951–2965.

<https://doi.org/10.1172/JCI98727>

(15–18). Muller and colleagues showed that the inhibition of glycolytic gene enolase 2 (ENO2) selectively suppresses growth and tumorigenic potential of glioblastoma cells carrying homozygous deletion of ENO1 (13). In an integrated analysis of genome-wide copy number alterations and RNA inhibition databases, the Hahn group identified as many as 56 copy number alterations yielding cancer liabilities owing to partial loss (CYCLOPS) genes as potential cancer-specific vulnerabilities (14). As a proof of concept, they showed that cancer cells harboring partial deletion of PSMC2 are sensitive to further suppression of PSMC2 by RNA interference. Most genetic alterations are the result of increased genomic instability in cancer, but do not contribute to tumor development (19). In particular, copy number losses that target tumor-suppressor genes frequently involve multiple neighboring essential genes that may not contribute to cancer development. The loss of such essential genes has been postulated as rendering cancer cells highly vulnerable to the further suppression or inhibition of these genes (14). Our recent studies revealed that focal deletion of *TP53* often encompasses *POLR2A*, a neighboring essential gene that encodes the largest subunit of the RNA polymerase II (Pol II) complex (12, 20). Because RNA Pol II is in charge of mRNA synthesis and indispensable for cell survival, complete knockout of *POLR2A* is lethal to any cells. Although hemizygous (or partial) loss of *TP53/POLR2A* has a minimal impact on cell proliferation and survival, it creates a therapeutic vulnerability in cancer cells containing such genomic defects. We found that suppression of *POLR2A* expression by α -amanitin (a highly specific inhibitor of the RNA Pol II) selectively inhibits proliferation, survival, and tumorigenic potential of colorectal cancer cells with hemizygous loss of *TP53*.

Mitosis is a critical process in cell proliferation. Cohesion between sister chromatids needs to be maintained until chromosome segregation as the cell transitions from late metaphase into early anaphase. In physical association with chromosome, cohesin is a multisubunit protein complex that mediates cohesion between replicated sister chromatids and is thus essential for cell proliferation (21). In mammalian cells, the canonical cohesin complex is composed of 4 components, including 2 structural maintenance of chromosome (SMC) subunits (SMC1 α/β and SMC3), 1 stromalin, 1 kleisin subunit, and stromal antigen (SA, also known as STAG) protein. A wide variety of cohesin complexes are formed with diverse key components and their regulatory proteins in mitotic cells. Besides their functions in chromosome segregation, these cohesin complexes are also important for DNA damage response, DNA repair, and genome integrity. Germline mutations in primary genes associated with the cohesin network lead to a group of human diseases termed as cohesinopathies, which are identified as multisystem developmental disorders with distinct phenotypes (22). For example, a dominantly inherited disease, Cornelia de Lange syndrome, is caused by point mutations or small deletions/insertions in 1 of the 2 alleles of *SMC1*, *SMC3*, or *NIPBL* (encoding a cohesion-loading factor). Defects in the cohesin complex are proposed to generate aneuploidy and genomic instability, which eventually result in tumorigenesis. Heterozygous knockout of *SA1* in mice drives aneuploidy and results in an increased risk of cancer due to impaired replication of telomeres (23).

In this study, we analyzed human cancer genomes and uncovered frequent mutations of the *SA2* gene in Ewing sarcoma (EWS) and bladder urothelial carcinoma (BUC). Consistent with the func-

tional redundancy between *SA1* and *SA2*, WT *SA1* is almost always retained in the *SA2*-mutated cancers. We reasoned that inactivating mutation of *SA2* creates cancer-specific therapeutic vulnerabilities, in which inhibition of *SA1* would result in complete loss of cohesin activity and, consequently, cell death. We found that inhibition of *SA1* in the *SA2*-deficient cells led to severe defects in chromatid separation and mitosis, followed by lethal failure of cell division. Moreover, depletion of *SA1* sensitizes the *SA2*-deficient cancer cells to PARP inhibitors due to homologous recombination (HR) deficiency in DNA repair. Our study expands the concept of essential lethality to essential paralog genes bearing loss-of-function mutations and also provides a potential therapeutic approach for the *SA2*-deficient cancers.

Results

The SA2 gene is frequently mutated in human EWS and BUC. In a search of The Cancer Genome Atlas (TCGA; <https://cancergenome.nih.gov/>) data sets for inactivating mutations of the essential paralog genes (24), we identified at least 10 candidates, which are listed in Supplemental Table 1 (supplemental material available online with this article; <https://doi.org/10.1172/JCI98727DS1>). *SA2*, which encodes a core subunit of the cohesin complex, is among the most commonly mutated genes across multiple cancer types (25, 26). The core complex of cohesin consists of 2 ATPase proteins (SMC1, SMC3), a “bridge” protein, and one of the 3 SA proteins in humans (21, 27). *SA1* is ubiquitously expressed in all types of cells. *SA2* on the X chromosome is robustly expressed, and its inactivating mutations on 1 allele result in complete null mutation due to X inactivation (28, 29). *SA3* is expressed primarily in germinal cells (30). In somatic cells, *SA1* and *SA2* are mutually exclusive subunits of the cohesin complex that contain either *SA1* or *SA2*, but never both (21, 27). Given the essential role of cohesin in the alignment and segregation of sister chromatids in mitosis, cancer cell-bearing inactivating *SA2* mutation was predicted to be highly sensitive to further inhibition of *SA1*, whereas the normal cell would not be affected due to the functional complementation of *SA2*.

Genomic analyses of TCGA found that *SA2* is frequently mutated, in approximately 15% of EWS (31, 32) and BUC (33–35); most of these mutations (82%, 24 out of 29 EWSs; 69%, 30 out of 44 BUCs) are truncating mutations that lead to complete loss of *SA2* expression (Figure 1, A and B). Notably, we observed a mutually exclusive mutation pattern between *SA1* and *SA2*, and WT *SA1* was almost always retained in the context of *SA2* mutation (Figure 1C and Supplemental Figure 1, A and B). Furthermore, their functional redundancy was supported by the inverse correlation between the expression levels of these 2 proteins in 179 human BUC tissue samples ($P = 0.002$, Figure 1, D and E; Supplemental Figure 1, C and D). A compensatory increase of *SA1* was observed in the *SA2*-mutated cell lines, whereas abundant expression of *SA3* was only observed in germinal cells (Figure 1F and Supplemental Figure 1, E–G).

Depletion of SA1 inhibits the growth of SA2-mutated tumors. We carried out shRNA-mediated depletion of *SA1* in a panel of *SA2*-mutated (EW8, TC32, UC3, and UC14) and *SA2*-intact (A673, TC71, RT4, and T24) cells. Specifically, the expression of doxycycline-induced (Dox-induced) *SA1* shRNA led to markedly reduced proliferation in *SA2*-mutated cells in comparison with that of the corresponding cells expressing control shRNA (Figure 2, A and B, and

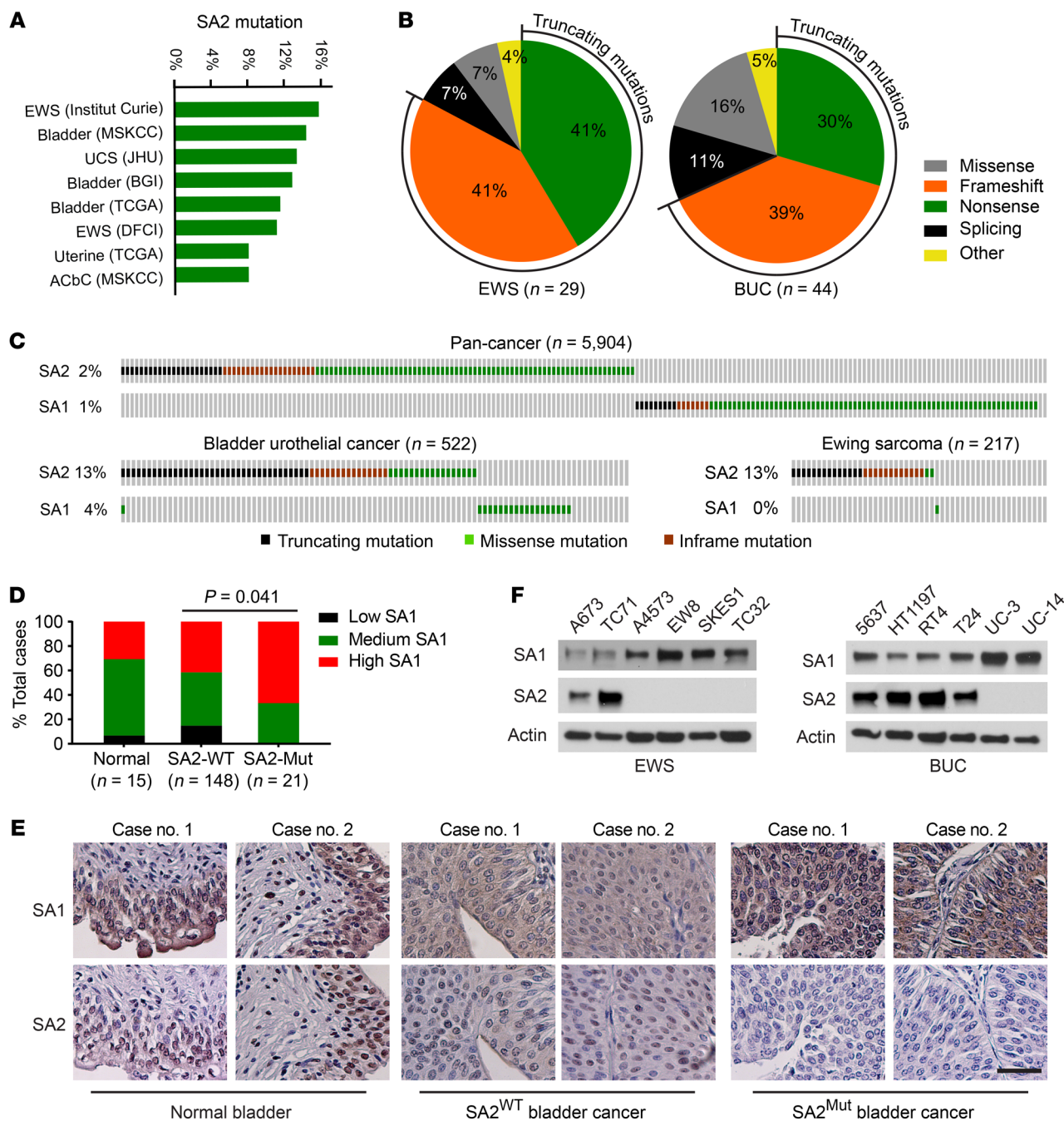


Figure 1. SA2 is frequently mutated in EWS and BUC. (A) Frequencies of SA2 mutation in a variety of human cancers. UCS, uterine carcinosarcoma; ACbC, adenoid cystic carcinoma of the breast. (B) The nature of SA2 alterations in all EWS (left) and BUC (right) data sets as listed in A. (C) Genomic alterations of SA1 and SA2 in EWS and BUC data sets as listed in A and in 15 other pan-cancer data sets in TCGA. (D and E) Negative correlation between SA1 and SA2 expression levels (D, Fisher's exact test) and their representative immunohistochemical images (E) in human BUC samples and adjacent normal controls. Scale bars: 50 μ m. (F) Protein levels of SA1 and SA2 in human EWS and BUC cell lines, determined by immunoblotting. β -Actin was used as a loading control. Experiments were conducted 3 times for validation.

Supplemental Figure 2, A and B). Despite significant knockdown (KD) of SA1, the SA2-intact cells (TC71 and RT4) continued to proliferate, whereas the SA2-mutated cells (TC32 and UC3) exhibited severe apoptosis (Figure 2C). In direct competition assays, stable KD of SA1 led to markedly reduced proliferation in UC3 cells, but not in RT4 cells (Supplemental Figure 2C). The effects of SA1 silence were rescued by ectopic expression of SA2 in the SA2-mutated TC32

and UC3 cells (Supplemental Figure 2, D and E). To exclude genetic difference across cell lines, we used the CRISPR/Cas9 system to generate isogenic TC71 and RT4 cell lines carrying inactivating mutations of SA2 (Supplemental Figure 3, A-D). To recapitulate the most frequent patient-derived mutations, we generated the isogenic cell lines bearing R216* or Q593* that disrupt SA2 expression due to early stop codon (Supplemental Figure 3, B and C). Isogenic SA2-

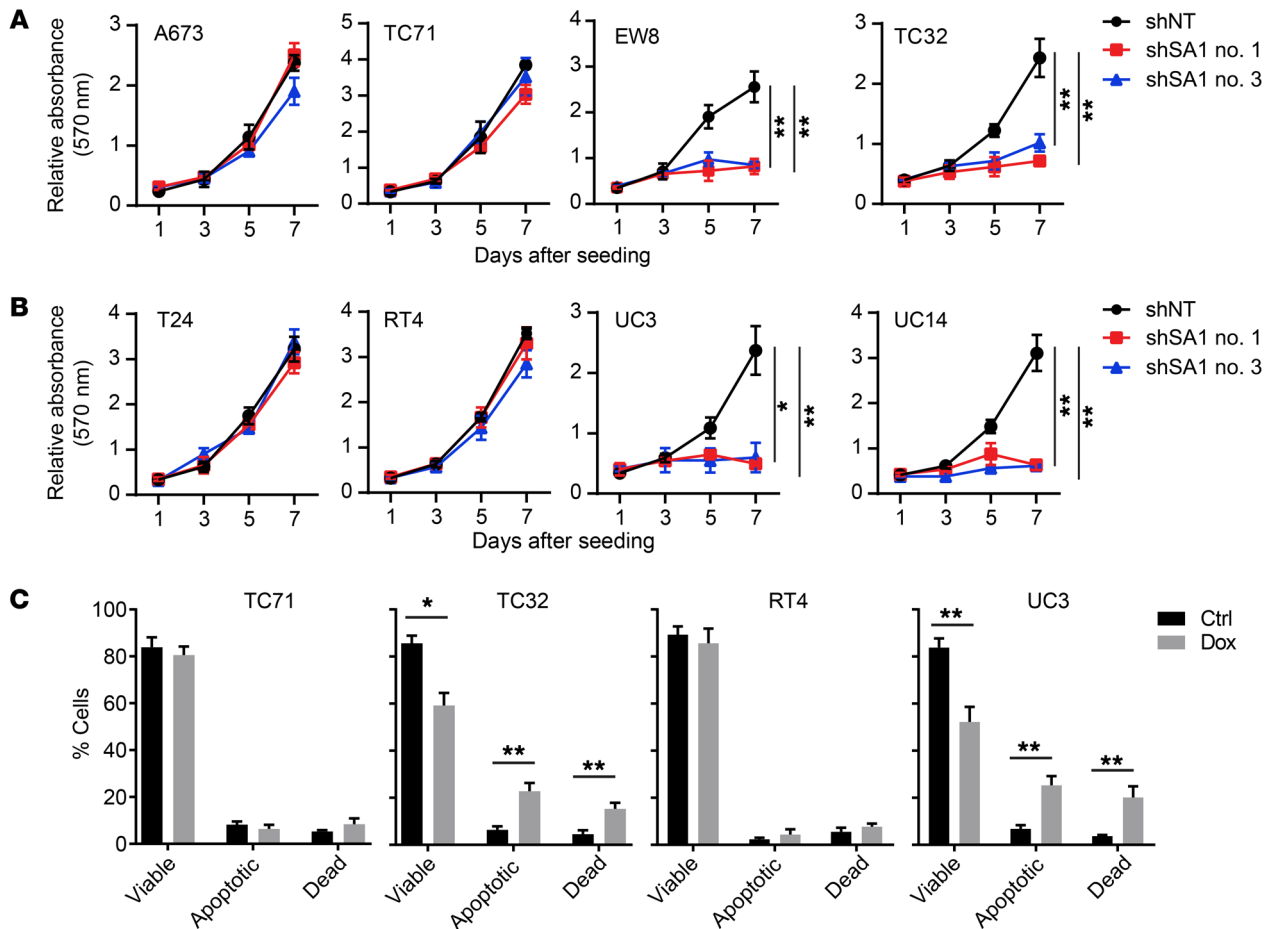


Figure 2. Depletion of SA1 inhibits the growth of SA2-mutated cells in vitro. (A and B) Cell growth curve, based on crystal violet staining, of EWS (A) and BUC (B) cell lines expressing Dox-inducible control shRNA (shNT) or SA1-specific shRNA (shSA1). (C) Fraction of apoptotic cells in the SA2-intact (TC71, RT4) and SA2-mutated (TC32, UC3) cell lines expressing Dox-induced shSA1 for 4 days. * $P < 0.05$; ** $P < 0.01$. One-way ANOVA followed by Tukey's t test (A and B) and unpaired 2-tailed t test (C) were performed to compare different groups. Data are presented as mean \pm SD and are representative of 3 independent experiments. Ctrl, control.

mutated cells exhibited proliferation rates similar to those of their parental cells, but KD of SA1 in these cells significantly inhibited their proliferation (Supplemental Figure 3, D–G). Moreover, Dox-induced SA1 shRNA inhibited the growth of SA2-mutated tumors derived from EWS (TC32) (Figure 3, A–C) and BUC (UC3) (Figure 3, D–F) cells in vivo, and correspondingly, these tumors had a marked reduction in cell proliferation (as measured by Ki-67 levels) and a significant increase in cell apoptosis (as measured by cleaved caspase-3 levels) (Supplemental Figure 4, A–F). However, SA1 depletion only had a modest effect on tumor growth of the SA2-intact tumors (TC71 and RT4) (Figure 3, A–F, and Supplemental Figure 4, A–F). These in vivo results confirmed that the paralogous SA1 is essential in the SA2-mutated tumors.

Inhibition of SA1 in SA2-mutated cells leads to lethal failure of cell division. Given the fundamental role of cohesion during mitosis (21, 27), we postulated that the combined depletion of SA1 and SA2, in contrast with the loss of either one alone, could severely impair cell division. We observed that depletion of SA1 selectively abolished the alignment and separation of sister chromatids in the SA2-mutated cells (TC32 and UC3), leading to the formation of railroad chromosomes (RR) and premature sister chromatid separation (PCS), but it only had modest effects on the SA2-intact cells (TC71 and RT4) (Figure 4, A and B) and normal primary mesenchymal stem cells (MSCs) (Supplemental Figure 5, A–C). Furthermore, the SA2-mutated TC32 cells displayed a significantly increased mitotic fraction and an induced cell population with 4N DNA content, characteristic of mitotic failure (Figure 4C and Supplemental Figure 5, D and E). Using time-lapse microscopy, we analyzed the mitotic fates as the cell progressed through mitosis from nuclear envelop breakdown (NEB) to anaphase or cell death. Depletion of SA1 led to a dramatic extension of the mitotic duration in the isogenic SA2-mutant TC71 cells, but not their parental cells, which is strongly correlated with mitotic catastrophe and cell death (Figure 4, D–F). In line with these observations, RNA-sequencing (RNA-seq) and gene ontology (GO) enrichment analyses showed that depletion of SA1 led to negative enrichment of cell-cycle and chromosome segregation pathways in the SA2-mutated TC32 cells, but not in the SA2-intact TC71 cells (Figure 4, G and H).

SA1 inhibition renders the SA2-mutated cancer cells vulnerable to DSB. We next analyzed the genome-wide gene expression profiles to systematically identify transcriptome reprogramming in the SA2-mutated cells. GO enrichment analyses of the SA2-mutated

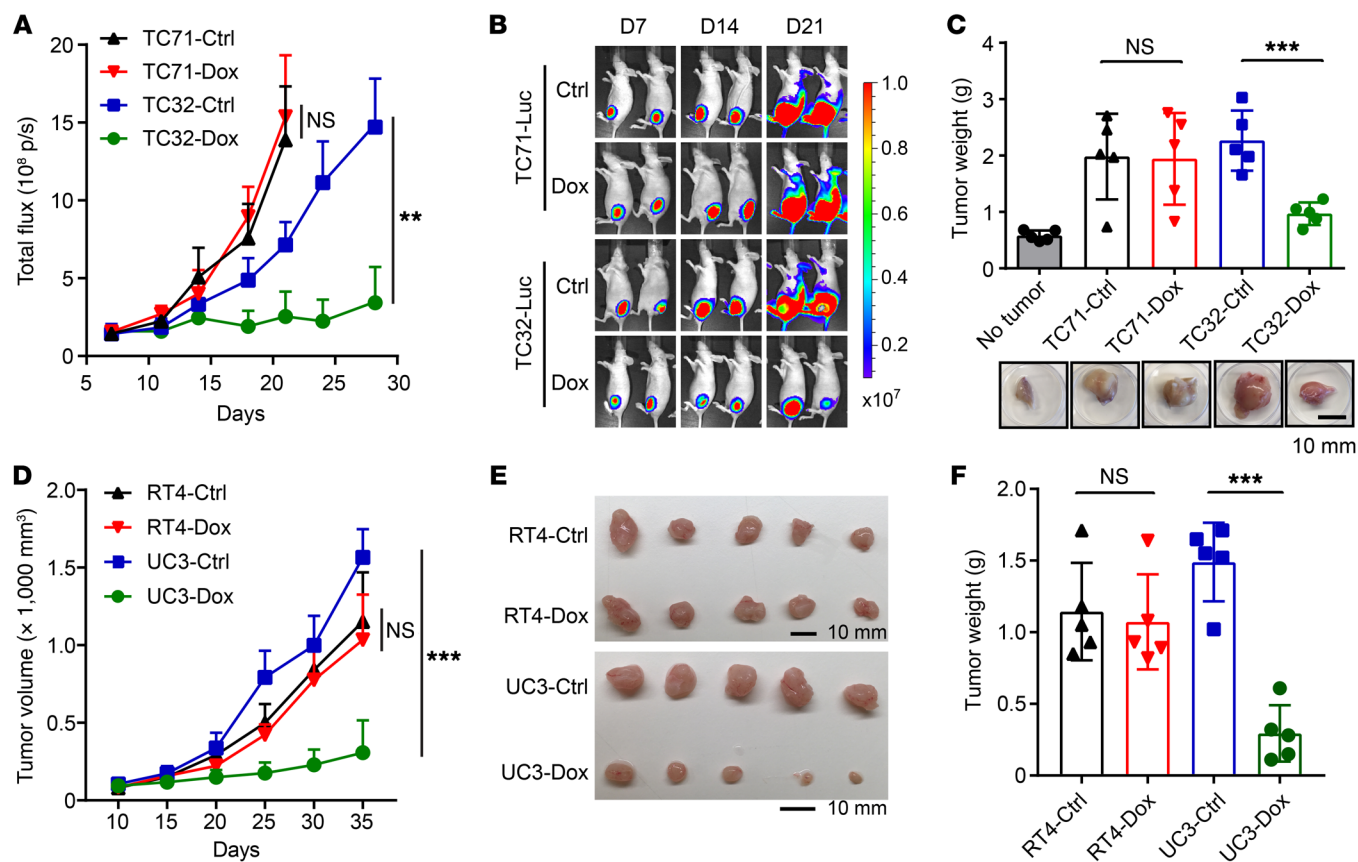


Figure 3. Depletion of SA1 impairs the growth of SA2-mutated tumors in vivo. (A–C) Tumor growth curves (A), representative bioluminescent images (B), and gross tumor weights (C) of xenograft tumors derived from orthotopically implanted (left intratibial injection) EWS TC71 and TC32 cells expressing Dox-inducible SA1 shRNA ($n = 5$). No tumor indicates the corresponding right lower leg without tumor implantation. (D–F) Tumor growth curves (D), gross tumor images (E), and weights (F) of xenograft tumors derived from subcutaneously implanted BUC cells RT4 and UC3 expressing Dox-inducible SA1 shRNA ($n = 5$). $**P < 0.01$; $***P < 0.001$ versus control by unpaired 2-tailed t test. Data are presented as mean \pm SD.

ed cells in the presence of SA1 inhibition demonstrated distinct expression patterns characterized by a marked decrease in canonical pathways associated with DSB repair, HR, and DNA damage checkpoint control (Figure 5, A and B). Because this feature was in line with an increased transcription-based HR-defective (HRD) score (ref. 36, Figure 5C, and Supplemental Figure 6, A and B), we reasoned that SA2-mutated cells, upon depletion of SA1, could be susceptible to PARP inhibitors due to their defective HR DNA repair. As expected, KD of SA1 dramatically inhibited HR repair efficacy in the SA2-mutated TC32 and UC3 cells, in contrast with the SA2-intact TC71 and RT4 cells (Figure 5D). To monitor DNA damage in individual cells, we performed a single-cell neutral comet assay and found that the basal level of DSB (measured by tail moments) was notably elevated in the SA2-mutated cells with SA1 KD (Figure 6A and Supplemental Figure 6C). While irradiation (IR) significantly increased the levels of DSB in both SA2-intact and -mutated cells, DSB levels were reduced to a level close to the basal level in the SA2-intact cells (TC71 and RT4), but not in the SA2-mutated cells (TC32 and UC3) at 12 hours after IR (Figure 6A). We also examined the effect of SA1 depletion on the temporal dynamics of γ -H2AX foci, another indicator for DSB. While it had a minimal effect on the number of γ -H2AX foci in the parental cells, the SA1 depletion profoundly increased the number and

duration of γ -H2AX foci in the SA2-mutated RT4 and TC71 cells (Figure 6, B and C, and Supplemental Figure 6D). Together, these data suggest that SA2-mutated cancer cells, upon depletion of SA1, are not only more susceptible to DNA damage, especially DSBs, but are also defective in DNA repair.

SA1 inhibition sensitizes SA2-mutated cancer cells to the treatment of PARP inhibitors. Treatment of PARP inhibitors causes failure of single-strand break (SSB) repair, which can lead to DSBs when DNA replication forks stall and collapse at persistent SSB lesions (37–39). In particular, the marked sensitivity of EWS cells harboring EWS-FLI1 to PARP inhibitors was first identified in a systematic screen for genomic markers that determine drug sensitivity in cancer cells. We performed dose-response experiments to measure the cytotoxicity of 3 PARP inhibitors (veliparib, olaparib, and BMN-673) in a panel of SA2-intact and -mutated cell lines (40). KD of SA1 in the SA2-mutated (R216*) RT4 cells led to remarkably dampened cell survival and increased apoptosis in the presence of olaparib and BMN-673 (Figure 7, A and B, and Supplemental Figure 7A). Moreover, the SA2-mutated cells (TC32 and UC3), upon depletion of SA1, were more sensitive to olaparib, but not cisplatin treatment, showing a synergistic effect with a combination index (CI) of less than 0.5 (Figure 7C and Supplemental Figure 7B). Notably, combined treatment with SA1 depletion and PARP

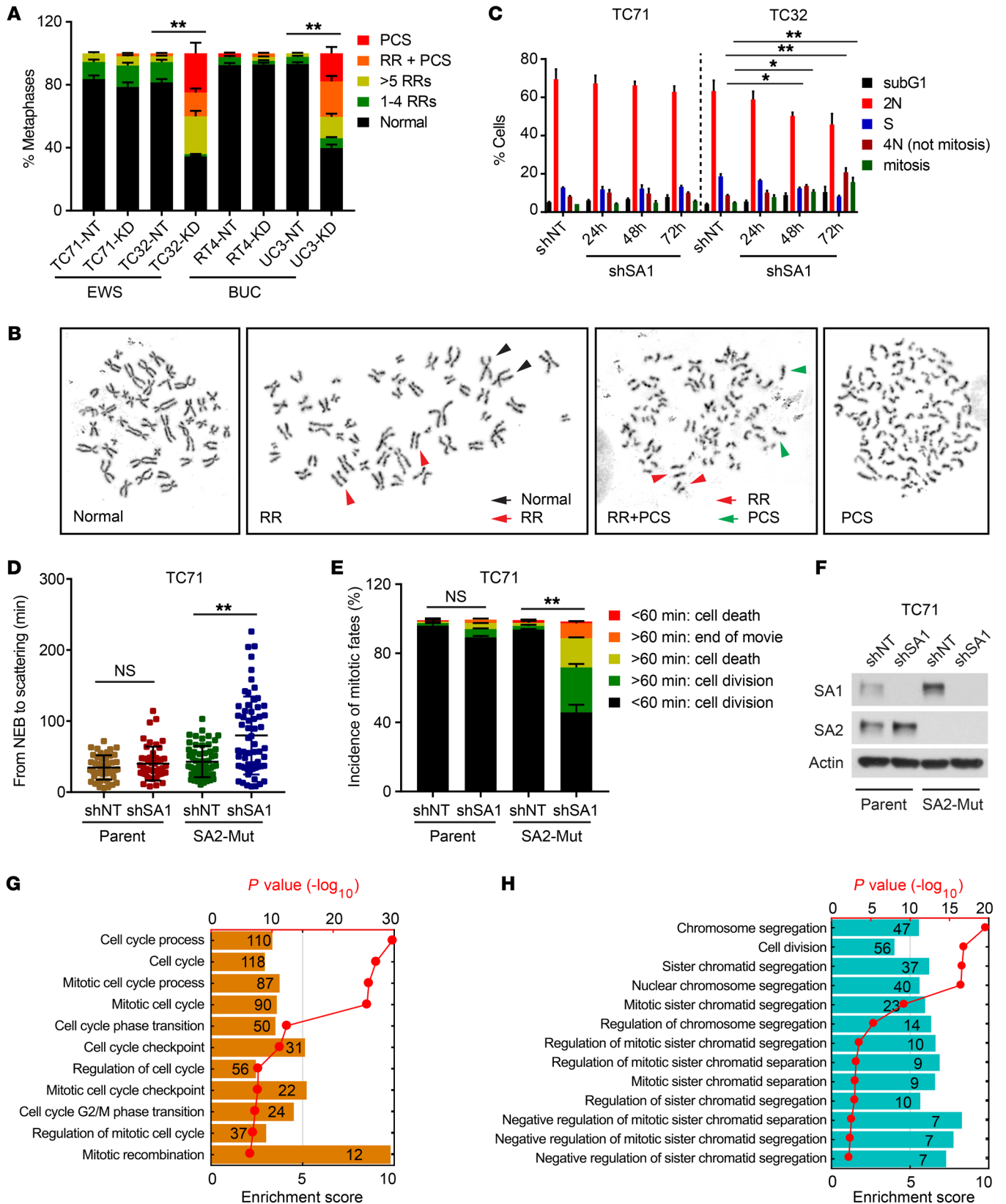


Figure 4. Depletion of SA1 in SA2-mutated cells leads to lethal mitotic retardation and failure. (A and B) Quantification of cohesion defects (A) and representative metaphase images (B) in EWS and BUC cells expressing Dox-inducible control shNT or SA1-specific shSA1. (C) Cell-cycle analysis of the SA1-depleted TC71 and TC32 cells by costaining with DAPI and phospho-histone H3. (D) Duration of mitosis in parental and isogenic SA2-mutated TC71 cells expressing Dox-induced control shNT or SA1-specific shSA1. Cells were synchronized with double-thymidine block and measured by differential interference contrast (DIC) microscopy time-lapse imaging for 48 hours after release. (E and F) Under each condition as described above, 50 cells were analyzed. Quantification of mitotic fates is shown in E. KD efficiency of shSA1 in TC71 cells is shown in F. (G and H) Negative enrichment of cell-cycle (G) and chromosome segregation (H) gene sets following SA1 KD in the SA2-mutated TC32 cells as determined by GO enrichment analysis. * $P < 0.05$; ** $P < 0.01$, Fisher's exact test (A and E) and unpaired 2-tailed t test (C and D). Data are presented as mean \pm SD and are representative of 3 independent experiments (A-F).

inhibitor had a minimal effect on normal primary MSC (Supplemental Figure 7, C-E). Cohesion defect analysis revealed a striking increase of PCS upon combined treatment with SA1 depletion and BMN-673 in the SA2-mutated cells (Figure 8A and Supplemental Figure 7F). Analysis of mitotic chromosome segregation by time-lapse fluorescence microscopy showed that SA1 depletion alone in the SA2-mutated cells resulted in a higher percentage of mitoses that lose chromosome alignment on the metaphase plate, a process termed as chromosome scattering. This cohesion defect was further aggravated when the treatment was combined with BMN-673, leading to a much prolonged mitotic arrest and thereafter massive mitotic catastrophe and cell death (Figure 8, B and C, and Supplemental Figure 7G).

SA1 inhibition sensitizes SA2-mutated tumors to the treatment of PARP inhibitor BMN-673. Based on the synergy of SA1 depletion and PARP inhibition, we investigated the efficacy of the combined treatment in SA2-mutated tumors in vivo. Mice bearing TC32-derived tumors expressing luciferase were randomized and treated with vehicle and nonspecific RNA control, SA1 siRNA (500 μ g/kg, twice per week), BMN-673 (0.33 mg/kg, once daily), or a combination of SA1 siRNA and BMN-673. Consistent with the results in vitro, treatment with SA1 siRNA or BMN-673 alone had limited effects, whereas their combinatorial treatment resulted in a significant suppression of tumor growth and an extension of mouse survival. Complete tumor regression was observed in 11 out of 13 mice from the combined treatment group (Figure 9, A-C). In addition, we also tested the antitumor activity of the combinatorial treatment in orthotopic BUC tumors derived from UC3 cells. siRNA-mediated SA1 depletion alone significantly inhibited tumor growth, which was further intensified when the treatment was combined with BMN-673, leading to complete tumor regression (12 out of 15 mice) (Figure 9, D-F). Correspondingly, these tumors exhibited a marked reduction in cell proliferation and a significant increase in cell apoptosis (Figure 9G and Supplemental Figure 8, A-D). The combinatorial treatment had no notable toxicity in vivo, as reflected by negligible body weight changes (Supplemental Figure 8, E and F). In contrast, there was no or limited synergistic effects of combinatorial treatment on tumor growth of the SA2-intact tumors (TC71 and RT4), although BMN-673 treatment alone resulted in modest tumor inhibition

(Supplemental Figure 9). Collectively, these results demonstrate that inhibition of SA1 sensitizes the SA2-mutated tumors to the treatment of PARP inhibitors.

Discussion

Due to the limited number of genomic mutations, targeted cancer therapies have yet to succeed in clinical applications for EWS and BUC. The oncogenic phenotype of EWS is primarily driven by one underlying prototypical chromosomal translocation, fusion of the EWS gene on chromosome 22q24 with 1 of 5 E-twenty-six (ETS) transcription factor gene family members (FLI, ERG, ETV1, E1AF, and FEV). Of the EWS/ETS translocations, a majority of Ewing's tumors harbor the EWS/FLI reciprocal translocation (41). However, targeting oncogenic transcription factors such as EWS/FLI has proven to be problematic due to their lack of intrinsic enzymatic activity and poor druggability. In the clinical trials for treating BUC, a number of inhibitors against EGFR, FGH receptor (FGHR), and human epidermal growth factor receptor 2 (HER2) have shown very limited activity as single agents or when combined with other therapeutic agents (42). Therefore, there is a great need to develop new therapeutic approaches to targeting specific genomic alterations in both types of cancer. Inactivating mutation of SA2 in EWS and BUC creates therapeutic vulnerability to the inhibition of SA1.

Recent progress in cancer genomics enables the identification of potential therapeutic targets from genomic alterations that have been long ignored due to their classification as nondriver mutations (20, 43). Paralog dependency is a new approach to identifying essential genes that are functionally required in the context of paralog gene deficiency. In this study, SA1 is identified as an essential gene in human cancers carrying inactivating mutations of SA2. SA2 and other recurrent alterations in subunits of the cohesin complex have been reported across a number of cancer types (21, 27, 44-46), which are assumed to abrogate chromosomal segregation, leading to increased chromosomal translocation and aneuploidy. However, a low rate of aneuploidy and genomic instability was often observed in the SA2-mutated cancers, including EWS, BUC, and myeloid neoplasms (47, 48). Therefore, biological consequences as well as clinical relevance remain to be clarified concerning SA2 and other cohesin-associated mutations. A significant intersection of SA2 mutation with alteration of the p53/p21 pathway was observed in EWS (49), suggesting that this genomic event may coordinate with other genomic alterations in tumorigenesis.

Inhibition of SA1 as a potential therapeutic approach was first suggested in cell-based studies (50, 51). However, all the variables and complexity of the in vivo tumor environment need to be considered before this approach can be considered for further therapeutic translation. To address the potential problems of irreproducibility in cell culture, the synthetic lethal interaction needs to be validated in vivo to determine whether a large therapeutic window exists. To better evaluate the in vivo tumor inhibition by the depletion of SA1, we established orthotopic tumor models in both EWS and UBC studies. Our results not only validate SA1 as a therapeutic target, but also identify SA1 inhibition as a promising approach to optimizing the PARP inhibitor-based therapies that are being rapidly developed for a wide array of human cancers. The previously reported sensitivity of EWS cells harboring EWS-FLI1 to PARP inhibitors was based on a screen for the correlation

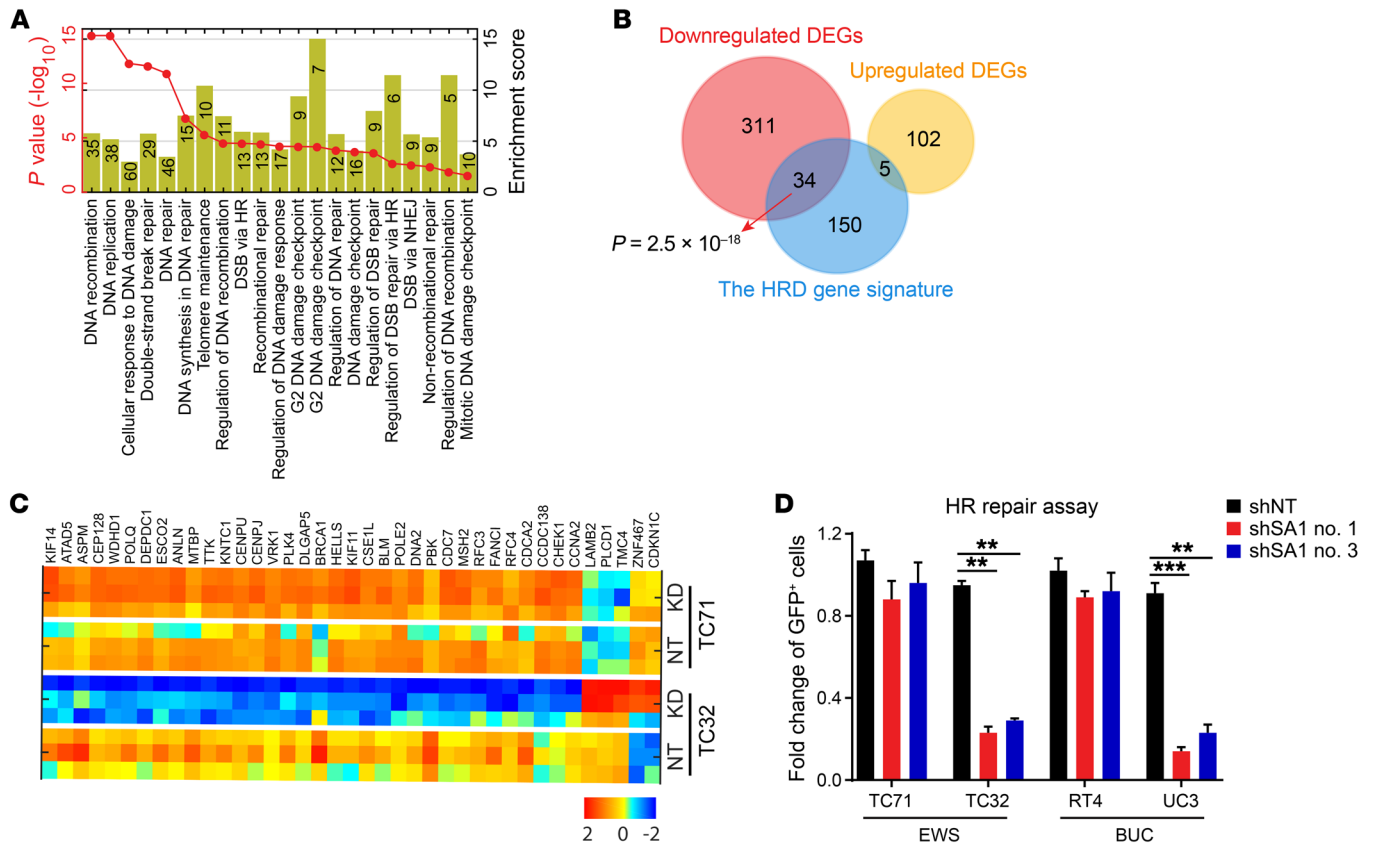


Figure 5. SA2-mutated cancer cells, upon depletion of SA1, are defective in HR. (A) Negative enrichment of the DNA repair gene set in the SA1-KD TC32 cells, determined by GO enrichment analysis. (B) Venn diagram showing overlaps of dysregulated DNA repair genes in the SA1-KD TC32 cells with the HRD gene signature. (C) Heatmap of clusters indicates that TC32 cells had increased levels of HRD upon SA1 KD, as analyzed by unsupervised clustering for HRD gene signature genes. (D) The SA2-mutated cancer cells are defective in the HR repair. Modified HR repair assay was performed by transfecting cells with DR-GFP DSB substrate and I-Sce I plasmids, and flow cytometry analysis was performed to detect GFP-positive cells. ***P* < 0.01; ****P* < 0.001, Fisher's exact test (B) and unpaired 2-tailed *t* test (D). Data are presented as mean ± SD and are representative of 3 independent experiments (D).

between genomic markers and drug sensitivity in cell lines (40). While notable sensitivity of 2 EWS cell lines (TC71 and TC32, both harboring EWS-FLI1) to the PARP inhibitor was observed in vitro, the treatment of BMN-673 had minimal inhibition on the growth of TC32-derived tumors in vivo (52). Mutations on BRAC1/2 or on those genes that promote “BRCAness” have not been found in global analyses of EWS and BUC cancer genomes. Consistently, the SA2-mutated tumors appeared to have little difference in their sensitivity to the PARP inhibitors that were tested as single agents in this study, in comparison with the SA2-intact tumors. However, systematic analyses of gene expression profiles revealed that inhibiting SA1 in the SA2-mutated tumors dramatically increased their susceptibility to the PARP inhibitors due to their defects in HR repair and cell-cycle checkpoint. Further advances in the development of SA1 inhibitors, along with the integration of functional markers of SA2 mutation, have the strong potential to extend the utility of PARP inhibitor-based therapies.

Methods

Cell culture, antibodies, and Western blot analysis. 5637, HT1197, RT4, T24, UM-UC-3, A673, SK-ES-1, and HUVEC cell lines were obtained from ATCC and cultured under standard conditions specified by the manufacturer. UM-UC-14 was purchased from Sigma-Aldrich, and

TC71 and A4573 were obtained from the Characterized Cell Line Core Facility (MD Anderson Cancer Center). TC32 and EW8 cell lines were provided by Joseph A. Ludwig (MD Anderson Cancer Center). Cell lines were banked in multiple aliquots on receipt to reduce risk of phenotypic drift. Cell identity was confirmed by validating STR DNA fingerprinting using the AmpFLSTR Identifier Kit according to the manufacturer’s instructions (Applied Biosystems).

Anti-SA1 (HPA035015), anti-SA2 (HPA002857), and anti-SA3 (HPA049106) antibodies were purchased from Sigma-Aldrich. Anti-Ki-67 (D3B5), anti-cleaved caspase-3 (Asp175, 5A1E), and anti-phospho-histone H2AX (Ser139, 20E3) antibodies were obtained from Cell Signaling Technology. Anti-β-actin (sc-1616), HRP-anti-goat IgG, where HRP indicates horseradish peroxidase (sc-2020), HRP-anti-rabbit IgG (sc-2054), and HRP-anti-mouse IgG (sc-2055) antibodies were purchased from Santa Cruz Biotechnology Inc. Cell lysate preparation, SDS-PAGE, and Western blotting were performed as previously described (53). See complete unedited blots in the supplemental material. The PARP inhibitors olaparib, veliparib, and BMN-673 were purchased from Selleckchem.

shRNA-mediated KD of SA1. SA1-specific shRNA clones were obtained from the MD Anderson shRNA and ORFeome Core Facility (originally from Open Biosystems). Four SA1-targeting shRNAs were screened. Only 2 of these shRNAs knocked down the level of

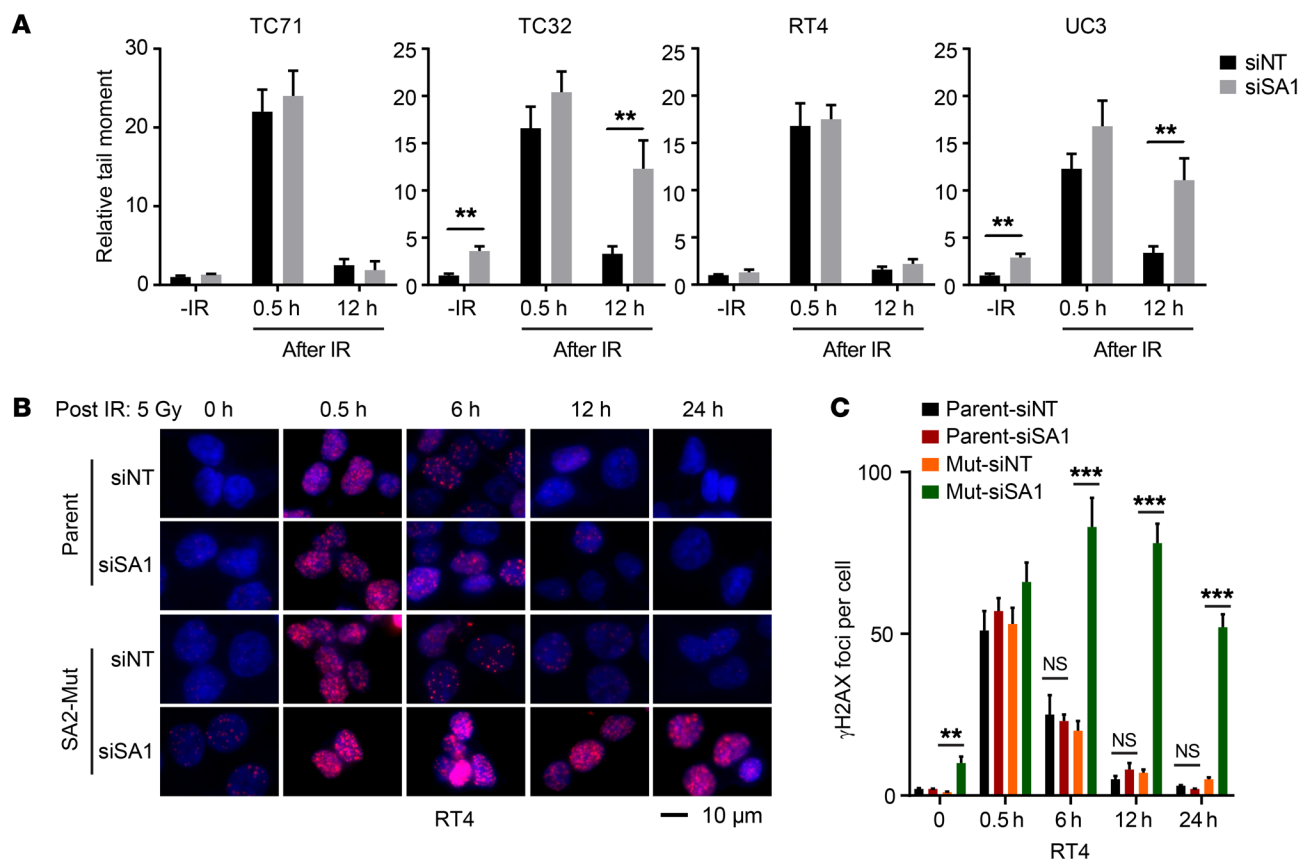


Figure 6. SA2-mutated cancer cells, upon depletion of SA1, are defective in IR-induced DSB repair. (A) Effect of SA1 KD on IR-induced DNA damage repair determined by neutral comet assay. Cells with or without siRNA against SA1 (siSA1) KD were treated with 5 Gy of IR and then subjected to neutral comet analysis at the indicated time points. Nontarget siRNA (siNT) was used as negative control. (B) Micrographs of parental and isogenic SA2-mutated RT4 cells with or without SA1 KD. Cells were stained for γ -H2AX following 5 Gy IR treatment at the indicated time points. (C) Histograms show the number of γ -H2AX foci per cell as described above. $**P < 0.01$; $***P < 0.001$, unpaired 2-tailed *t* test. Data are presented as mean \pm SD and are representative of 3 independent experiments.

SA1 protein by at least 60%–80% in all the EWS and BUC cell lines tested. The clone identification numbers and shRNA sequences were V3LHS_325808 (5'-AGAACATCTGATTCTACGT-3') and V3LHS_325809 (5'-GAAGTAGTAACCTCCAACCT-3'). The hairpin sequences in the GIPZ vector were cloned into the TRIPZ vector (Dharmacon) using a protocol provided by the manufacturer. The TRIPZ vector is a Dox-inducible system with a red fluorescent protein (RFP) reporter, and single colonies with robust SA1 KD (>80%) were chosen for the downstream experiments.

Quantitative RT-PCR. Total RNA was isolated using Direct-zol RNA extraction kit (Zymo Research) and then reverse-transcribed (RT) using qScript cDNA SuperMix Kit (Quantabio). The resulting cDNA was used for quantitative PCR using PerfeCTa SYBR Green SuperMix (Quantabio) with gene-specific primers, and the results were normalized with β -actin as a control. PCR primers are listed in Supplemental Table 2. Ct values were calculated using ROX normalization.

Competition assay using SA1 shRNA. RT4 and UC3 cells were infected with control shNT or SA1 shRNA-expressing lentiviruses (pTRIPZ backbone) at a MOI of 2. Two days after infection, Dox-induced RFP-positive cells were sorted using a BD FACSJazz Cell Sorter (BD Biosciences) at the MD Anderson Flow Cytometry and Cellular Imaging Core Facility. Next, RFP-positive cells were mixed

with uninfected RFP-negative cells at a ratio of 1:1 and cultured for 6 passages. The numbers of RFP-positive and total cells on each passage were analyzed and quantified by flow cytometry, and the percentages of RFP-positive cells were calculated.

Cell proliferation and survival assay. Equal numbers of cells were plated in 12-well plates in triplicate. Cells were fixed with 1% formaldehyde/methanol and stained with 0.1% crystal violet. After staining, wells were washed 3 times with PBS and destained with acetic acid. Absorbance of the crystal violet solution was measured at 590 nm. In cell-survival assay, cells were seeded at a concentration of 1,000 cells per well in 96-well plates and treated with Dox (2 μ g/ml) or indicated PARP inhibitors for 4 to 7 days. Cell viability was quantified using WST-1 reagent (Roche) according to the manufacturer's instructions. All experiments were performed in triplicate.

Apoptosis and cell-cycle analysis. Cells were treated with Dox or PARP inhibitors for indicated time points and stained with annexin V-APC and SYTOX Blue (Thermo Fisher). Apoptosis was analyzed by flow cytometry using BD FACSARIA III Flow Cytometer (BD Biosciences) according to the manufacturer's protocol. Both apoptotic (annexin V positive and SYTOX blue negative) and dead (annexin V positive and SYTOX blue positive) cells were included in the analyses. For cell-cycle analysis, cells were fixed in ice-cold 70%

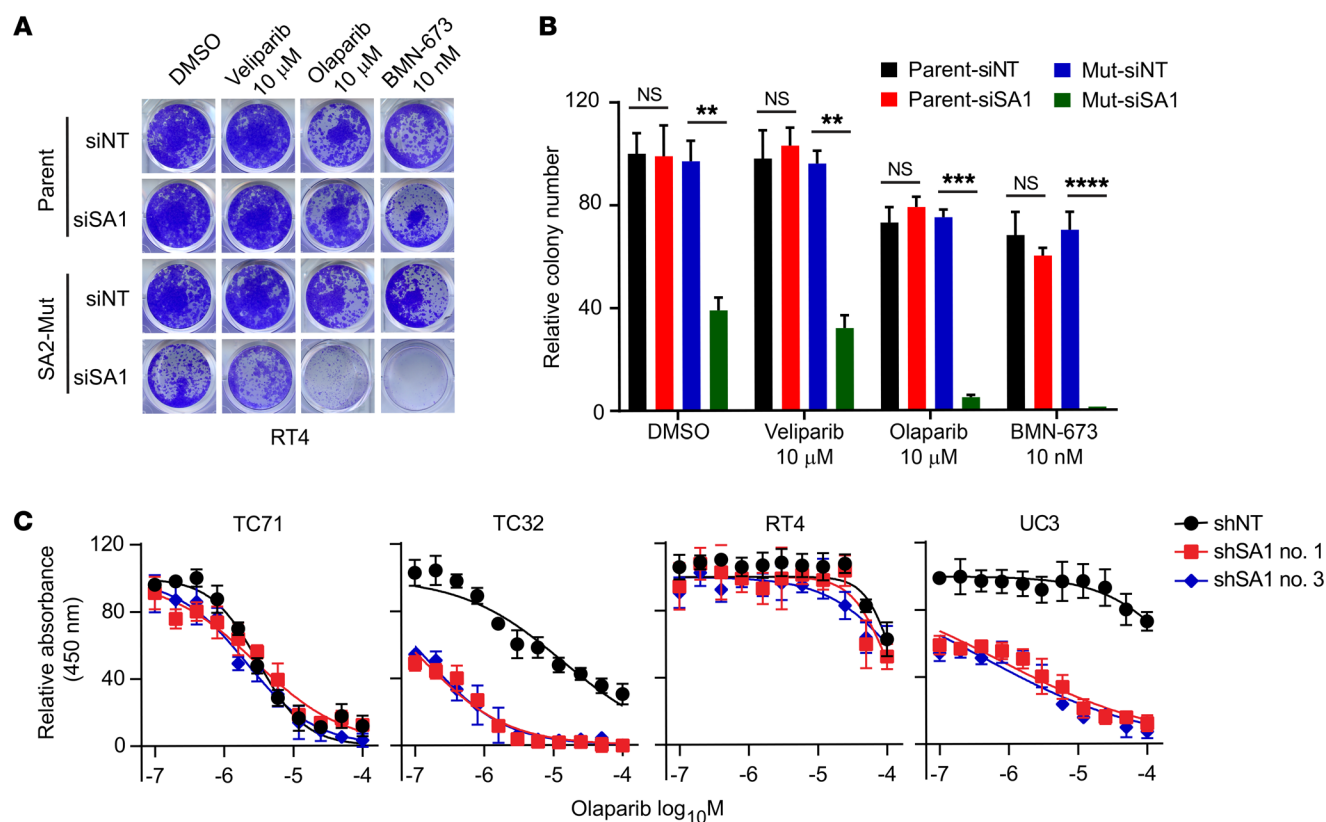


Figure 7. SA1 depletion sensitizes SA2-mutated cells to the treatment of PARP inhibitors. (A and B) SA1 depletion sensitizes the SA2-mutated RT4 cells to the treatment of PARP inhibitors. Representative images (A) and quantitative results (B) of cell survival are shown. Parental and isogenic SA2-mutated RT4 cells expressing control or SA1 siRNA were treated with indicated PARP inhibitors for 72 hours. (C) Dose-dependent responses of the SA2-intact or -mutated cell lines to the treatment of olaparib (72 hours) with or without SA1 KD. $**P < 0.01$; $***P < 0.001$; $****P < 0.0001$, unpaired 2-tailed *t* test. Data are presented as mean \pm SD and are representative of 3 independent experiments.

ethanol. Cells were incubated with rabbit anti-pS10-histone H3 (D7N8E, Cell Signalling) for 1 hour and with Alexa Fluor 488 goat anti-rabbit (Thermo Fisher) for 30 minutes. Cells were washed and resuspended in PBS with 1:10 DAPI (Thermo Fisher)/RNase staining buffer (BD Biosciences) and analyzed by flow cytometry on a BD LSR Fortessa (BD Biosciences). Cell-cycle analysis was conducted using FlowJo software.

Cohesion-defect analysis. Cohesion-defect analysis was performed as previously described (54). To enrich for mitotic cells, the medium was supplemented with 330 nM nocodazole for 4 hours. Cells were harvested by mitotic shake-off and centrifugation. Subsequently, cells were incubated with 200 ng/ml demecolcine (Sigma-Aldrich) in medium for 20 minutes, harvested, resuspended in 75 mM KCl for 20 minutes, and fixed in methanol/acetic acid (3:1). Cells were dropped onto glass slides and stained with 5% Giemsa (Merck); cohesion defects were microscopically analyzed. Under each condition, 50 metaphases per slide were counted on 2 coded slides as technical replicates. Chromosome spreads from individual cells were classified and scored with regard to the status of sister chromatid cohesion based on the indicated morphological criteria.

Time-lapse microscopy. To quantify mitotic duration and cell-division status, cells were synchronized with a double-thymidine block and, after 8-hour release, were seeded in 12-well plates. Phase contrast images of cells with stable RFP-H2B expression and SA1 KD were

acquired every 10 minutes at 37°C using an IncuCyte live-cell imaging system (Essen BioScience). Images were processed using ImageJ software (NIH) and analyzed using the mitotic duration plugin.

HR repair analysis. The HR and SSA repair assays were performed as described previously (55–58). To examine the role of SA1 depletion in DSB repair, cells were pretreated with or without Dox (2 μ g/ml) for 48 hours and then transfected with plasmids expressing I-SceI for 48 hours. Cells transfected with an empty vector were used as a negative control. GFP-expressing plasmid (pEGFP-C1) was used for transfection efficiency control. Flow cytometry analysis was performed to detect GFP-positive cells using BD LSR Fortessa (BD Biosciences) with FlowJo software. The repair efficiency was scored as the percentage of GFP-positive cells.

Neutral comet assay. The neutral comet assay was performed using the CometAssay Kit (Trevigen) according to the manufacturer's instructions. Briefly, following IR, cells were harvested and mixed with agarose with low melting temperature as single-cell suspensions at 37°C. The resulting cell/agarose mixture was immediately layered onto comet assay slides. The agarose was allowed to set for 1 hour at 4°C, and cells on the slides were then lysed at 4°C for 30 minutes in the dark. After lysis, the slides were subjected to electrophoresis and then immersed twice in distilled water for 10 minutes and once in 70% (v/v) ethanol for 5 minutes. The slides were then dried completely at room temperature and stained with SYBR Green I (Trevigen). Comets

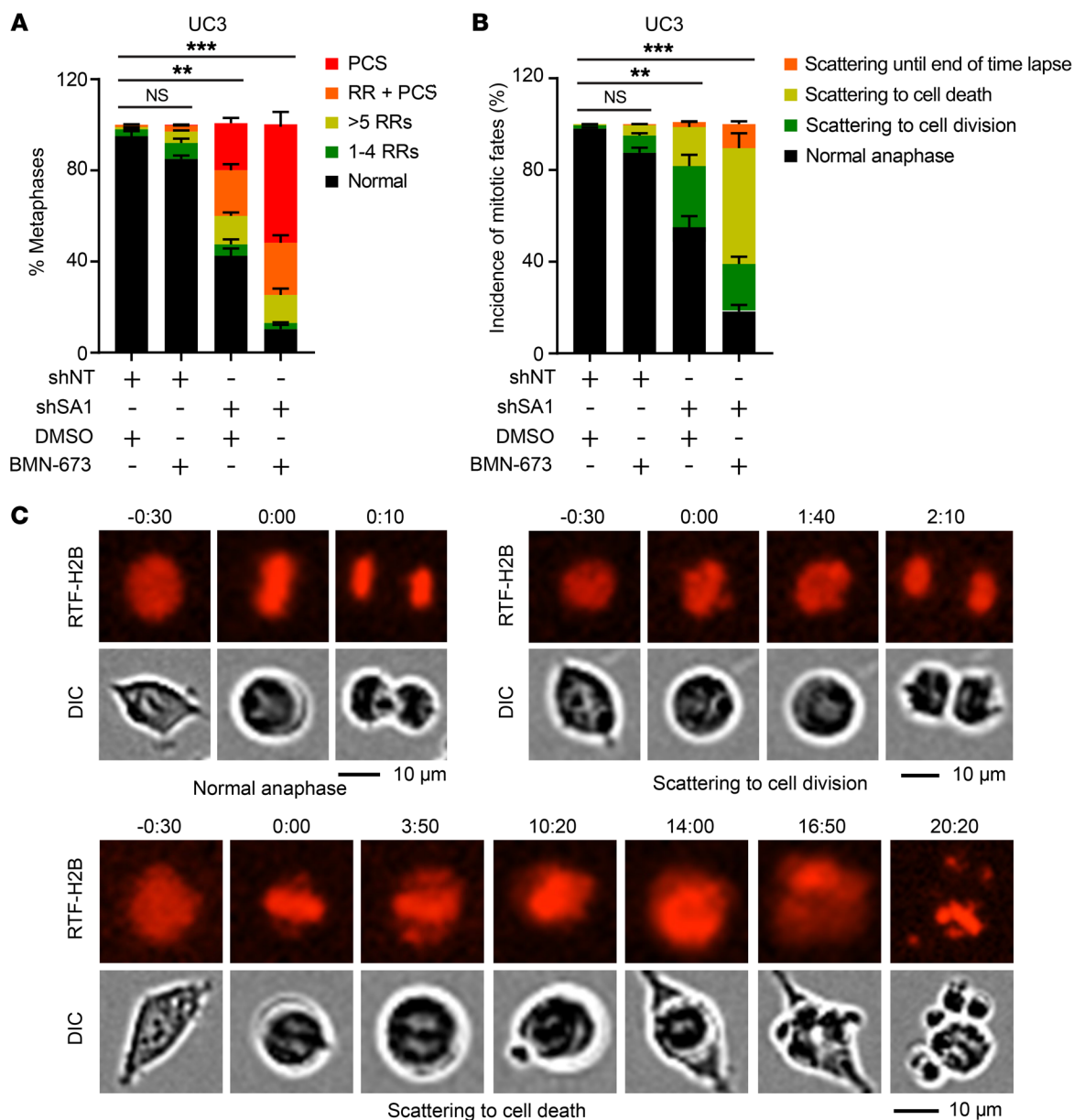


Figure 8. Combined treatment with SA1 depletion and PARP inhibitor in SA2-mutated cells aggravates cohesion defects. (A) Quantification of cohesion defects in UC3 cells expressing Dox-induced control shRNA or shSA1 with or without BMN-673 (10 nM) treatment. (B, C) Percentages of mitotic fates (B) in UC3 cells after combined treatment with Dox-induced SA1 KD and BMN-673 (10 nM). The representative images for each type of mitotic fate are shown in C. $^{**}P < 0.01$; $^{***}P < 0.001$, Fisher's exact test. Data are presented as mean \pm SD and are representative of 3 independent experiments.

were observed and recorded by a Leica DM4B fluorescence microscope and analyzed with CometScore (TriTek). The olive tail moment was determined by scoring 100 cells in each sample.

Immunofluorescence staining. Immunofluorescence staining and imaging were performed as previously described (55). Briefly, cells were cultured on chamber slides and treated with 5 Gy IR. At different times following IR treatment, cells were washed with PBS, fixed with 4% paraformaldehyde at room temperature for 10 minutes, blocked with 5% normal horse serum for 30 minutes, and probed with anti- γ -H2AX antibody (Cell Signalling) at 4°C overnight and secondary antibody Alexa Fluor 594-conjugated goat anti-rabbit IgG for 1 hour at room temperature. The slides were washed and incubated with DAPI for 2 minutes in the dark and then analyzed with a fluorescent microscope.

Liposomal nanoparticle preparation. SA1 siRNAs for in vivo delivery were encapsulated into neutral 1,2-dioleoyl-sn-glycero-3-phosphatidylcholine-based (DOPC-based) liposomes as previously described (12). DOPC and siRNA were mixed in the presence of excess tertiary butanol at a ratio of 1:10 (w/w) siRNA/DOPC. Tween 20 was added to the mixture in a ratio of 1:19 Tween 20/siRNA-DOPC. The siRNA sequences were as follows: control siRNA (5'-UUCUCCGAAACGUGU-CACGU-3' and 5'-ACGUGACACGUUCGGAGAA-3'); STAG1 siRNA no. 1 (5'-GAAAUUGGAGUAUGGAUGA-3' and 5'-UCAUCCAUA-CUCCAAUUC-3'); and STAG1 siRNA no. 2 (5'-GACAGUUCAUUC-AUACCUA-3' and 5'-UAGGUAUGAAUGAACUGUC-3'). The mixture was vortexed, frozen in an acetone/dry-ice bath, and lyophilized. Before in vivo administration, this preparation was hydrated with PBS

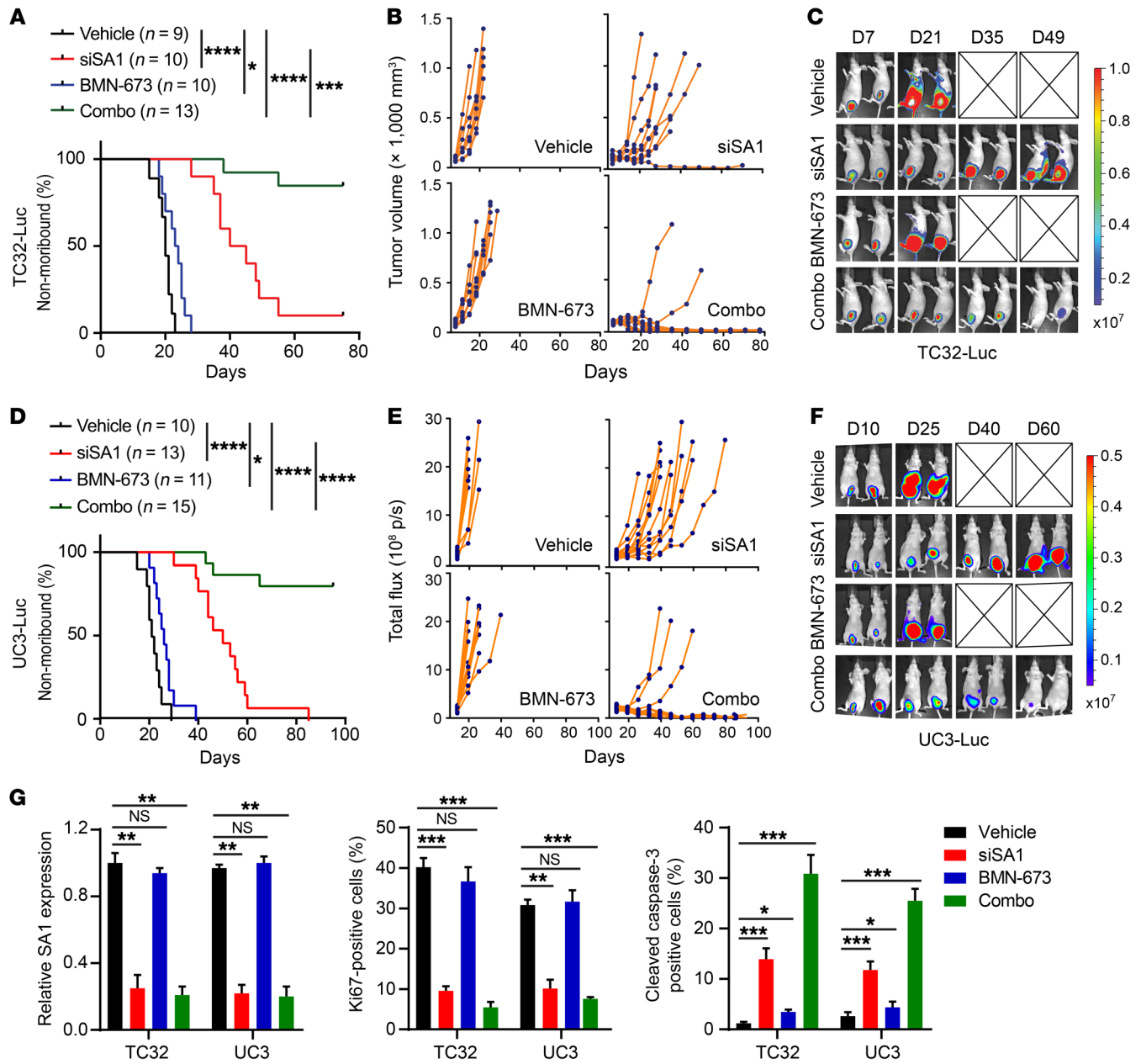


Figure 9. SA1 depletion sensitizes SA2-mutated tumors to the treatment of the PARP inhibitor BMN-673. (A–F) Kaplan-Meier survival curves (A and D), individual tumor growth curves (B and E), and representative bioluminescent images (C and F) of xenograft tumors derived from orthotopically implanted TC32 (A–C) or UC3 (D–F) cells. Once tumor was established, mice were randomly divided into 4 groups and then treated with DMSO and control siRNA, siSA1 nanoliposome (twice weekly), BMN-673 (daily), or a combination of siSA1-DOPC nanoliposome and BMN-673. (G) Quantification of SA1 KD efficiency, cell proliferation (Ki-67 staining), and apoptosis (cleaved caspase-3 staining) in the xenografted tumor tissues described above. * $P < 0.05$; ** $P < 0.01$; *** $P < 0.001$; **** $P < 0.0001$, log-rank Mantel-Cox test (A and D) and unpaired 2-tailed t test (G). Data are representative of 2 independent experiments and are presented as mean \pm SD.

at room temperature at a concentration of 500 to 1,000 μg siRNA/kg per injection (each mouse received 100 μl of DOPC-siRNA-PBS solution by the intraperitoneal route).

Xenograft tumor studies. Four- to six-week-old female NU/J mice were purchased from Jackson Laboratories and housed under pathogen-free conditions. When used in a power calculation, our sample size predetermination experiments indicated that 5 mice per group can identify the expected effect of SA1 depletion on tumor size and weight ($P < 0.05$) with 90% power. Animals were randomly divided into different groups. Dox-inducible BUC cells T24 and UC3 (5×10^5)

in 100 μl growth medium (mixed with Matrigel at 1:1) were injected subcutaneously into the flank using a 1 ml syringe (Fisher Scientific). Tumor size was measured twice a week using a caliper, and tumor volume was calculated using the standard formula: $0.5 \times L \times W^2$, where L is the longest diameter and W is the shortest diameter.

For the orthotopic EWS mouse model, the NU/J mice were anaesthetized and TC71 and TC32 cells (5×10^5 cells in 50 μl of Matrigel) expressing luciferase were implanted by intratibial injection as previously described (59). Briefly, the skin of the knee joint was prepped with alternating povidone iodine scrubs and 70% isopropyl

alcohol wipes. Mouse tibias were predrilled with a 26-gauge needle and x-rayed to validate needle placement. Then luciferase-expressing EWS cells were injected with a glass Hamilton syringe and 45° bevel 26-gauge needle. For the orthotopic BUC mouse model, the NU/J mice were anesthetized with 2.5% isoflurane and cells were implanted following the procedures, as described previously (60). A 24-gauge Teflon-coated catheter was introduced into the lumen of the bladder through the urethra. Urine was evacuated from the bladder by mild pressure on the abdomen. RT4 and UC3 cells (0.5×10^6) expressing luciferase in a 50 μ l suspension of serum-free RPMI-1640 medium were then injected into the bladder. To prevent voiding of UC3 cells, the catheter was held in place for at least 45 minutes with the injection syringe attached. The catheter was removed before the mouse recovered from anesthesia. Tumors were monitored by the IVIS system after luciferin injection for 15 minutes. After initial establishment of tumor (100 mm³ for subcutaneous implants and 2×10^8 photons/s total flux for orthotopic implants), mice were treated with 1 μ g/ml Dox in drinking water for 3 to 6 weeks. The Dox water was changed every other day.

For xenograft tumor studies using DOPC-siRNA and PARP inhibitor BMN-673, mice bearing orthotopically implanted EWS or bladder tumors were randomized to 4 groups (the number of mice in each group is indicated in Figure 9 and Supplemental Figure 9) and received the following treatments: (a) DMSO and DOPC-control siRNA; (b) DMSO and DOPC-SA1 siRNA alone; (c) BMN-673 and DOPC-control siRNA; and (d) DOPC-SA1 siRNA plus BMN-673. DOPC-siRNA-PBS solution was administered twice weekly by intraperitoneal injection, whereas the inhibitor BMN-673 (0.33 mg/kg) was administered once daily by oral gavage. Tumors were monitored by the IVIS system twice a week. Body weights were recorded every week. Mice were euthanized when they met the institutional euthanasia criteria for tumor size and overall health condition. Tumors were removed, photographed, and weighed. The freshly dissected tumor tissues were fixed in 10% buffered formalin overnight, transferred to 70% ethanol, embedded in paraffin, sectioned, and stained with H&E and indicated antibodies.

Immunohistochemistry and human bladder tissue microarray. BUC tissue microarray (BL2081) was purchased from Biomax, including 192 bladder tumor samples and 16 normal adjacent tissue samples. Tissue samples were deparaffinized and rehydrated. Antigen was retrieved using 0.01 M sodium citrate buffer (pH 6.0) at a subboiling temperature for 10 minutes after boiling in a microwave oven. To block endogenous peroxidase activity, the sections were incubated with 3% hydrogen peroxide for 10 minutes. After 1 hour of preincubation in 5% normal goat serum to prevent nonspecific staining, the samples were incubated with antibodies against SA1 (catalog HPA035015, Sigma-Aldrich), SA2 (catalog HPA002857, Sigma-Aldrich), SA3 (catalog HPA049106, Sigma-Aldrich), Ki-67 (catalog D3B5, Cell Signaling), or cleaved caspase-3 (catalog 5A1E, Cell Signaling) at 4°C overnight. The sections were incubated with a biotinylated secondary antibody (4Plus biotinylated anti-mouse or anti-rabbit IgG, Biocare) and then incubated with avidin-biotin peroxidase complex solution and developed using a DAB substrate kit (550880, BD Biosciences) according to the manufacturer's protocol. Counterstaining color was carried out using Harris Modified Hematoxylin. The BUC tissue microarrays were reviewed and scored in a blinded manner for staining intensity. Signals of immunohistochemistry data in tumor cells were visually quantified using a scoring system from 0 to 3, multiplied intensity of signal, and

percentage of positive cells (signal: 0 = no signal, 1 = weak signal, 2 = intermediate signal, and 3 = strong signal; percentage: 10%–100%). High expression of SA1 corresponded to a staining score of 201–300, and medium expression corresponded to a staining score of 101–200, whereas low expression corresponded to a staining score of 0–100. Slides were scanned using Panoramic 250 Flash III (3DHISTECH Ltd.), and images were captured through Panoramic Viewer software (3DHISTECH Ltd.).

Bioinformatic analysis. We extracted the most frequently mutated metabolic/housekeeping genes across human cancers by using the data obtained from the Broad Institute Cancer Cell Line Encyclopedia (CCLE; www.broadinstitute.org/ccle) and TCGA (61, 62), as previously described (12, 13, 63). To determine whether a mutated gene functions as a redundant housekeeping gene, we first analyzed its expression profiles in tumor and normal tissues as well as its general functions from the literature. Second, we asked whether a known genetic interaction resulting in lethality was already documented in invertebrates or mice, using *Saccharomyces* Genome Database (SGD; <https://www.yeastgenome.org/>); WormBase (WB; <https://wormbase.org/#012-34-5>); FlyBase (FB; <http://flybase.org/>); and Mouse Genome Informatics (MGI; <https://www.google.com/search?q=Mouse+Genome+Informatics&ie=utf-8&oe=utf-8&client=firefox-b-1>). Third, we searched for available cell lines and small molecules to test the redundancy hypothesis. Finally, we searched MGI to determine whether knockout of the drug-target homologue is deleterious, to predict how well a potential drug would be tolerated.

For deep sequencing, TC71 and TC32 cells were treated with or without Dox for 72 hours. Then total mRNA was isolated using the Direct-zol RNA Extraction Kit (Zymo Research) and submitted for deep sequencing. FastQC was adopted first to examine RNA-seq quality, followed by a step to map high-quality sequences to the human genome (hg19, UCSC Genome Browser, <https://genome.ucsc.edu/>) with STAR, an RNA-seq aligner (64). The featureCounts (65) was used to assign uniquely mapped reads to genes according to UCSC refGene (hg19). After normalizing the gene expression based on trimmed mean of M values, we employed EdgeR (66) to perform differential expression analysis with comparison between no treatment (NT) and KD for each cell line, TC32 and TC71, respectively. If 1 gene had an FDR-adjusted *P* value of less than 0.05 and an absolute value of fold change (FC) (log scale with base 2) larger than 1.75, the gene was identified as a differentially expressed gene (DEG). DEGs with higher expression levels, whose average counts per million (CPM) were larger than 2 for either NT or KD samples, were collected for DAVID functional annotation analysis (67). An HRD signature consisting of 230 DEGs was obtained as previously described (68). The HRD score was defined as the sum of all RNA expression in the HRD signature. Both raw and processed data were deposited in the NCBI's Gene Expression Omnibus database (GEO GSE111004).

Statistics. Each experiment was repeated 3 times or more. Unless otherwise noted, data are presented as mean \pm SD, and Student's *t* test (unpaired, 2 tailed) was used to compare 2 groups of independent samples. In an unpaired *t* test, we assumed equal variance and that no samples were excluded from the analysis. One-way ANOVA followed by Tukey's *t* test was conducted to compare 3 or more groups of independent samples. Survival analysis was done using the Kaplan-Meier method, as assessed using a log-rank Mantel-Cox test. *P* < 0.05 was considered statistically significant.

Study approval. All animal experimental protocols were approved by the Institutional Animal Care and Use Committee at the University of Texas MD Anderson Cancer Center and the Indiana University School of Medicine.

Author contributions

Y Liu and XL conceived and coordinated the study. Y Liu, GJ, XL, HX, CH, XH, and XZ designed the study. Y Liu and KVDJ performed *in vivo* studies. Y Li, LZ, and YF helped generate isogenic cell lines using the CRISPR/Cas9 system. SL, JW, CZ, Y Liu, XL, and XZ analyzed the cancer genomics database and gene expression profiles. Y Liu and XL interpreted results and wrote the manuscript. MR and BPS analyzed the results of *in vivo* studies.

Acknowledgments

We thank J. Ludwig for providing EWS cell lines TC32 and EW8. We are grateful to G. Peng and members of her laboratory for their help with HR repair and HRD assays. Bioinformatics analysis was conducted by the Collaborative Core for Cancer Bioinformat-

ics (C3B) shared by the Indiana University Simon Cancer Center (P30CA082709) and the Purdue University Center for Cancer Research (P30CA023168) with support from the Walther Cancer Foundation. This work was funded in part by US NIH grants R01CA203737 (to XL) and R01CA206366 (to XH and XL), the Vera Bradley Foundation (to XL), National Natural Science Foundation of China grant 81620108030 (to GJ), and the Indiana University Strategic Research Initiative fund (to XL).

Address correspondence to: Yunhua Liu, Department of Medical and Molecular Genetics, Indiana University School of Medicine, 980 West Walnut Street, Indianapolis, Indiana 46202, USA. Phone: 317.278.8194; Email: yliu15@iu.edu. Or to: Guang Ji, Institute of Digestive Diseases, Longhua Hospital, Shanghai University of Traditional Chinese Medicine, 725 Wanping South Road, Shanghai 200032, China. Phone: 8621.6438.5700, ext. 9501; Email: jiliver@vip.sina.com. Or to: Xiongbin Lu, Department of Medical and Molecular Genetics, Indiana University School of Medicine, 980 West Walnut Street, Indianapolis, Indiana 46202, USA. Phone: 317.274.4398; Email: xiolu@iu.edu.

- Huang M, Shen A, Ding J, Geng M. Molecularly targeted cancer therapy: some lessons from the past decade. *Trends Pharmacol Sci.* 2014;35(1):41–50.
- Gross S, Rahal R, Stransky N, Lengauer C, Hoeflich KP. Targeting cancer with kinase inhibitors. *J Clin Invest.* 2015;125(5):1780–1789.
- Zhang J, Yang PL, Gray NS. Targeting cancer with small molecule kinase inhibitors. *Nat Rev Cancer.* 2009;9(1):28–39.
- Chan DA, Giaccia AJ. Harnessing synthetic lethal interactions in anticancer drug discovery. *Nat Rev Drug Discov.* 2011;10(5):351–364.
- Kaelin WG. The concept of synthetic lethality in the context of anticancer therapy. *Nat Rev Cancer.* 2005;5(9):689–698.
- Mullard A. Synthetic lethality screens point the way to new cancer drug targets. *Nat Rev Drug Discov.* 2017;16(10):736.
- Mullard A. Synthetic lethality screens point the way to new cancer drug targets. *Nat Rev Drug Discov.* 2017;16(10):736.
- Brunen D, Bernards R. Drug therapy: Exploiting synthetic lethality to improve cancer therapy. *Nat Rev Clin Oncol.* 2017;14(6):331–332.
- Livraghi L, Garber JE. PARP inhibitors in the management of breast cancer: current data and future prospects. *BMC Med.* 2015;13:188.
- O'Shaughnessy J, et al. Iniparib plus chemotherapy in metastatic triple-negative breast cancer. *N Engl J Med.* 2011;364(3):205–214.
- Lord CJ, Ashworth A. BRCAness revisited. *Nat Rev Cancer.* 2016;16(2):110–120.
- Liu Y, et al. TP53 loss creates therapeutic vulnerability in colorectal cancer. *Nature.* 2015;520(7549):697–701.
- Muller FL, et al. Passenger deletions generate therapeutic vulnerabilities in cancer. *Nature.* 2012;488(7411):337–342.
- Nijhawan D, et al. Cancer vulnerabilities unveiled by genomic loss. *Cell.* 2012;150(4):842–854.
- Dey P, et al. Genomic deletion of malic enzyme 2 confers collateral lethality in pancreatic cancer. *Nature.* 2017;542(7639):119–123.
- Mavrakis KJ, et al. Disordered methionine metabolism in MTAP/CDKN2A-deleted cancers leads to dependence on PRMT5. *Science.* 2016;351(6278):1208–1213.
- Tsherniak A, et al. Defining a cancer dependency map. *Cell.* 2017;170(3):564–576.e16.
- Kryukov GV, et al. MTAP deletion confers enhanced dependency on the PRMT5 arginine methyltransferase in cancer cells. *Science.* 2016;351(6278):1214–1218.
- Lee JK, Choi YL, Kwon M, Park PJ. Mechanisms and consequences of cancer genome instability: lessons from genome sequencing studies. *Annu Rev Pathol.* 2016;11:283–312.
- Liu Y, et al. Targeting tumor suppressor genes for cancer therapy. *Bioessays.* 2015;37(12):1277–1286.
- Peters JM, Tedeschi A, Schmitz J. The cohesin complex and its roles in chromosome biology. *Genes Dev.* 2008;22(22):3089–3114.
- Brooker AS, Berkowitz KM. The roles of cohesins in mitosis, meiosis, and human health and disease. *Methods Mol Biol.* 2014;1170:229–266.
- Peters JM. The many functions of cohesin — different rings to rule them all? *EMBO J.* 2012;31(9):2061–2063.
- Cancer Genome Atlas Research Network. Comprehensive molecular characterization of urothelial bladder carcinoma. *Nature.* 2014;507(7492):315–322.
- Kim JS, et al. Intact cohesin, anaphase, and chromosome segregation in human cells harboring tumor-derived mutations in STAG2. *PLoS Genet.* 2016;12(2):e1005865.
- Zlotorynski E. Chromosome biology: different turfs for cohesin and condensin. *Nat Rev Mol Cell Biol.* 2017;18(10):592–593.
- Losada A. Cohesin in cancer: chromosome segregation and beyond. *Nat Rev Cancer.* 2014;14(6):389–393.
- Kim MS, Kim SS, Je EM, Yoo NJ, Lee SH. Mutational and expression analyses of STAG2 gene in solid cancers. *Neoplasma.* 2012;59(5):524–529.
- Solomon DA, et al. Mutational inactivation of STAG2 causes aneuploidy in human cancer. *Science.* 2011;333(6045):1039–1043.
- Prieto I, et al. Mammalian STAG3 is a cohesin specific to sister chromatid arms in meiosis I. *Nat Cell Biol.* 2001;3(8):761–766.
- Crompton BD, et al. The genomic landscape of pediatric Ewing sarcoma. *Cancer Discov.* 2014;4(11):1326–1341.
- Tirode F, et al. Genomic landscape of Ewing sarcoma defines an aggressive subtype with co-association of STAG2 and TP53 mutations. *Cancer Discov.* 2014;4(11):1342–1353.
- Robertson AG, et al. Comprehensive molecular characterization of muscle-invasive bladder cancer. *Cell.* 2017;171(3):540–556.e25.
- Kim PH, et al. Genomic predictors of survival in patients with high-grade urothelial carcinoma of the bladder. *Eur Urol.* 2015;67(2):198–201.
- Guo G, et al. Whole-genome and whole-exome sequencing of bladder cancer identifies frequent alterations in genes involved in sister chromatid cohesion and segregation. *Nat Genet.* 2013;45(12):1459–1463.
- Konstantinopoulos PA, et al. Gene expression profile of BRCAness that correlates with responsiveness to chemotherapy and with outcome in patients with epithelial ovarian cancer. *J Clin Oncol.* 2010;28(22):3555–3561.
- Bryant HE, et al. Specific killing of BRCA2-deficient tumours with inhibitors of poly(ADP-ribose) polymerase. *Nature.* 2005;434(7035):913–917.
- Farmer H, et al. Targeting the DNA repair defect in BRCA mutant cells as a therapeutic strategy. *Nature.* 2005;434(7035):917–921.
- Shen Y, et al. BMN 673, a novel and highly potent PARP1/2 inhibitor for the treatment of human cancers with DNA repair deficiency. *Clin Cancer Res.* 2013;19(18):5003–5015.
- Garnett MJ, et al. Systematic identification of

- genomic markers of drug sensitivity in cancer cells. *Nature*. 2012;483(7391):570–575.
41. Pishas KI, Lessnick SL. Recent advances in targeted therapy for Ewing sarcoma. *F1000Res*. 2016;5:2077.
 42. van Kessel KE, Zuiverloon TC, Alberts AR, Boormans JL, Zwarthoff EC. Targeted therapies in bladder cancer: an overview of in vivo research. *Nat Rev Urol*. 2015;12(12):681–694.
 43. Muller FL, Aquilanti EA, DePinho RA. Collateral lethality: a new therapeutic strategy in oncology. *Trends Cancer*. 2015;1(3):161–173.
 44. Barber TD, et al. Chromatid cohesion defects may underlie chromosome instability in human colorectal cancers. *Proc Natl Acad Sci U S A*. 2008;105(9):3443–3448.
 45. Hill VK, Kim JS, Waldman T. Cohesin mutations in human cancer. *Biochim Biophys Acta*. 2016;1866(1):1–11.
 46. Fisher JB, McNulty M, Burke MJ, Crispino JD, Rao S. Cohesin mutations in myeloid malignancies. *Trends Cancer*. 2017;3(4):282–293.
 47. Balbás-Martínez C, et al. Recurrent inactivation of STAG2 in bladder cancer is not associated with aneuploidy. *Nat Genet*. 2013;45(12):1464–1469.
 48. Kon A, et al. Recurrent mutations in multiple components of the cohesin complex in myeloid neoplasms. *Nat Genet*. 2013;45(10):1232–1237.
 49. Brohl AS, et al. The genomic landscape of the Ewing Sarcoma family of tumors reveals recurrent STAG2 mutation. *PLoS Genet*. 2014;10(7):e1004475.
 50. van der Lelij P, et al. Synthetic lethality between the cohesin subunits STAG1 and STAG2 in diverse cancer contexts. *Elife*. 2017;6:e26980.
 51. Benedetti L, Cereda M, Monteverde L, Desai N, Ciccarelli FD. Synthetic lethal interaction between the tumour suppressor STAG2 and its paralog STAG1. *Oncotarget*. 2017;8(23):37619–37632.
 52. Vanden Heuvel JP, et al. Replication Study: systematic identification of genomic markers of drug sensitivity in cancer cells. *Elife*. 2018;7:e29747.
 53. Liu Y, Sun R, Lin X, Liang D, Deng Q, Lan K. Kaposi's sarcoma-associated herpesvirus-encoded microRNA miR-K12-11 attenuates transforming growth factor beta signaling through suppression of SMAD5. *J Virol*. 2012;86(3):1372–1381.
 54. de Lange J, et al. Defective sister chromatid cohesion is synthetically lethal with impaired APC/C function. *Nat Commun*. 2015;6:8399.
 55. Shen J, et al. ARID1A deficiency impairs the DNA damage checkpoint and sensitizes cells to PARP inhibitors. *Cancer Discov*. 2015;5(7):752–767.
 56. Takizawa Y, et al. GEMIN2 promotes accumulation of RAD51 at double-strand breaks in homologous recombination. *Nucleic Acids Res*. 2010;38(15):5059–5074.
 57. Stecklein SR, et al. BRCA1 and HSP90 cooperate in homologous and non-homologous DNA double-strand-break repair and G2/M checkpoint activation. *Proc Natl Acad Sci U S A*. 2012;109(34):13650–13655.
 58. Wang Q, et al. Rad17 recruits the MRE11-RAD50-NBS1 complex to regulate the cellular response to DNA double-strand breaks. *EMBO J*. 2014;33(8):862–877.
 59. Campbell JP, Merkel AR, Masood-Campbell SK, Eleftheriou F, Sterling JA. Models of bone metastasis. *J Vis Exp*. 2012;(67):e4260.
 60. Kasman L, Voelkel-Johnson C. An orthotopic bladder cancer model for gene delivery studies. *J Vis Exp*. 2013;(82):50181.
 61. Cerami E, et al. The cBio cancer genomics portal: an open platform for exploring multidimensional cancer genomics data. *Cancer Discov*. 2012;2(5):401–404.
 62. Gao J, et al. Integrative analysis of complex cancer genomics and clinical profiles using the cBioPortal. *Sci Signal*. 2013;6(269):p11.
 63. Kandath C, et al. Mutational landscape and significance across 12 major cancer types. *Nature*. 2013;502(7471):333–339.
 64. Dobin A, et al. STAR: ultrafast universal RNA-seq aligner. *Bioinformatics*. 2013;29(1):15–21.
 65. Liao Y, Smyth GK, Shi W. featureCounts: an efficient general purpose program for assigning sequence reads to genomic features. *Bioinformatics*. 2014;30(7):923–930.
 66. Robinson MD, McCarthy DJ, Smyth GK. edgeR: a Bioconductor package for differential expression analysis of digital gene expression data. *Bioinformatics*. 2010;26(1):139–140.
 67. Huang DW, et al. The DAVID Gene Functional Classification Tool: a novel biological module-centric algorithm to functionally analyze large gene lists. *Genome Biol*. 2007;8(9):R183.
 68. Peng G, et al. Genome-wide transcriptome profiling of homologous recombination DNA repair. *Nat Commun*. 2014;5:3361.